

HILLSIDE

HENGE

8408 Hillside Ave.
Hollywood Hills

34° 5' 56.976" N
118° 22' 21.828" W



The first step is to dream — to believe that large scale projects are possible. This is the spirit which guided us when we embarked on a path that led us to work on 8408 Hillside. This was an architectural design project that was important not only for Henge, but for its impact and its context. The project had a prestigious work team which was the result of our strong bond and entente with MASS Beverly — a partner who has been able to fully get on board with our philosophy. This interior design project came with an important responsibility. It was inspired by another iconic architectural symbol, the Stahl House. SAOTA’s design recognizes its importance, and contextualizes the architectural style of the house on the symbolic and aesthetic stature of its surroundings. We went on a journey in synergy with our partners, and succeeded in achieving a modern evolution of the perfect home, nestled between the skies and hills of Los Angeles.

Paolo Tormena, Henge CEO

“Relatively new to LA, the opportunity to work on a project in eye-shot of the iconic Stahl House was a privilege we weren’t going to take for granted.” — Mark Bullivant, Director of SAOTA, Architecture

Stahl House, Designed by Pierre Koenig, 1960



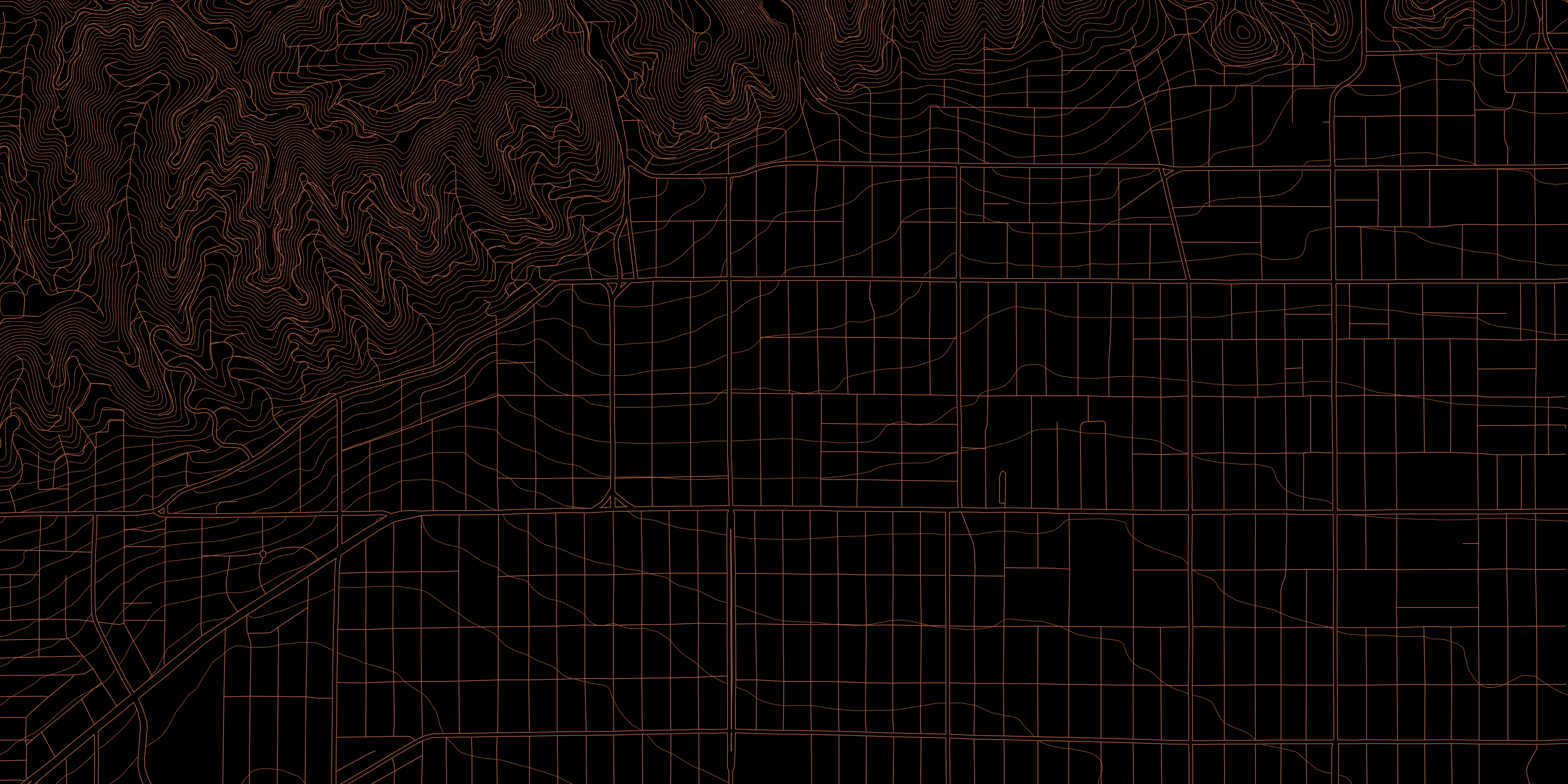
MASS Beverly is one of the key USA partner for Henge — a leading design showroom with a range of sophisticated international luxury design products and in-house capabilities. MASS Beverly’s analysis of the project’s interior architecture and thorough knowledge of Henge’s products and design philosophy allowed 8408 Hillside’s design to be executed in a sophisticated and integrated vision. The team’s interpretation of Henge’s collection resulted in custom made-to-measure products specially made for the 8408 Hillside estate.

Mary Ta and Lars Hypko, MASS Beverly

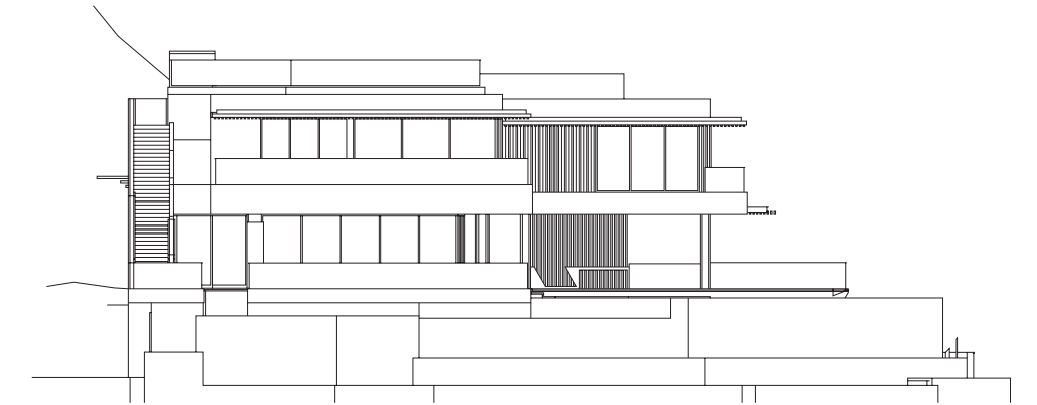
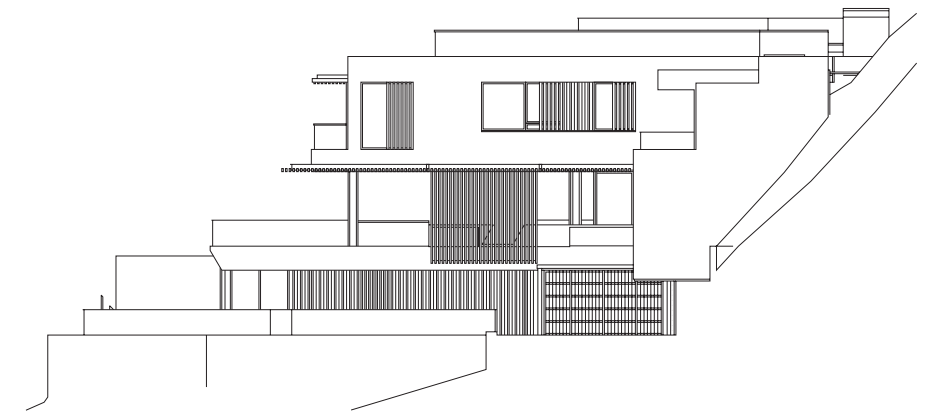
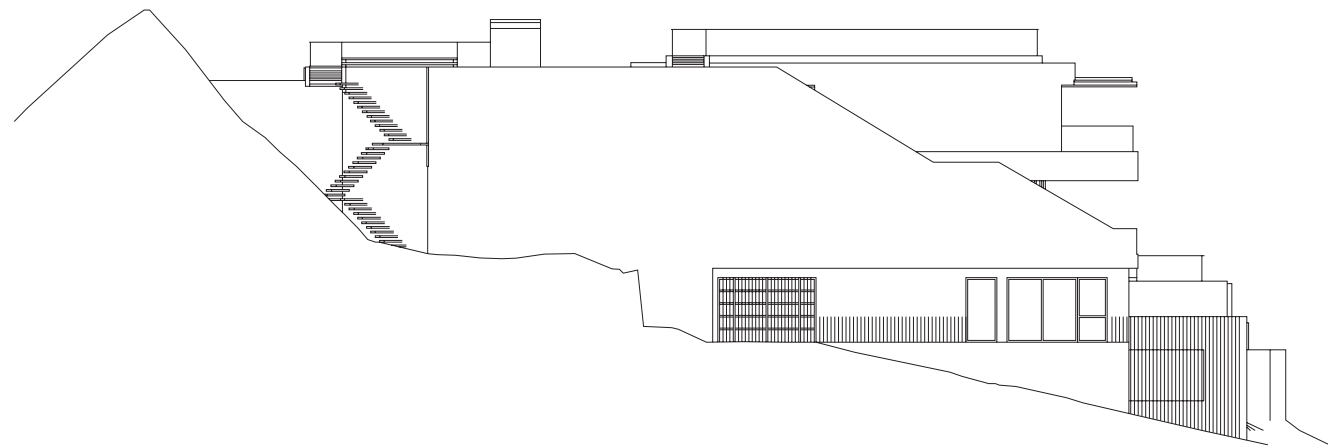
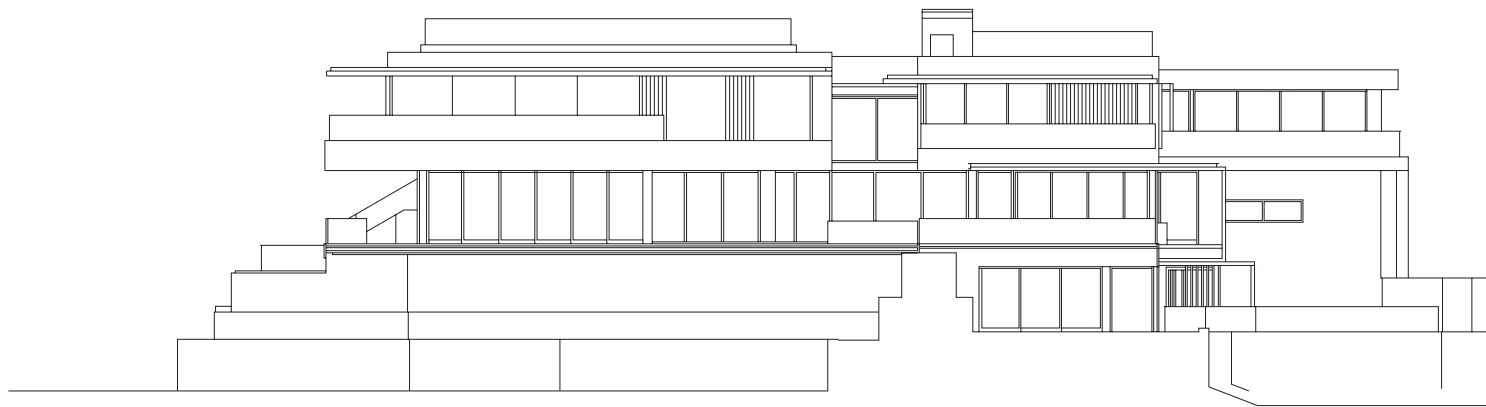
High above Sunset Strip is one of the most expensive areas in Los Angeles. The 8408 Hillside private estate not only has spectacular views of the city, but is perched next to the most iconic modern homes in architectural history. Adjacent is the Pierre Koenig-designed Stahl House, aka Case Study House No.22. Neighboring one another, the Stahl House and 8408 Hillside represent a visual chronology of Los Angeles architecture.

The Stahl House is an example of a quintessential mid-century modern residence and 8408 Hillside is now the evolved version of the perfect modern home.





In dialogue with the Case Study house heritage of Los Angeles, Hillside is characterized by its striking roof lines. The overhangs define outdoor rooms blending the indoors with the natural elements of the outdoors. The home has large windows and clean lines which are accented with lush landscaping that precedes the gorgeous panoramic views of Los Angeles.



Designed by the world-renowned architectural firm SAOTA in collaboration with experienced local architects Woods + Dangan, this 20,000 sq. ft. estate uses linear aspects of natural materials such as steel, concrete, and glass to create a seamless confluence between the interior and exterior spaces of the house.



“The architectural renderings of the residence transported you abroad to places like Sao Paolo, Brazil or Mexico City, where modern villas and retreats in these exotic locations elegantly blend a natural and urban design sensibility. Weaving custom and standard items from Henge, we were able to achieve the same unique emotion in the hills above Los Angeles.” — Seth Matheson, MASS Beverly, Interiors

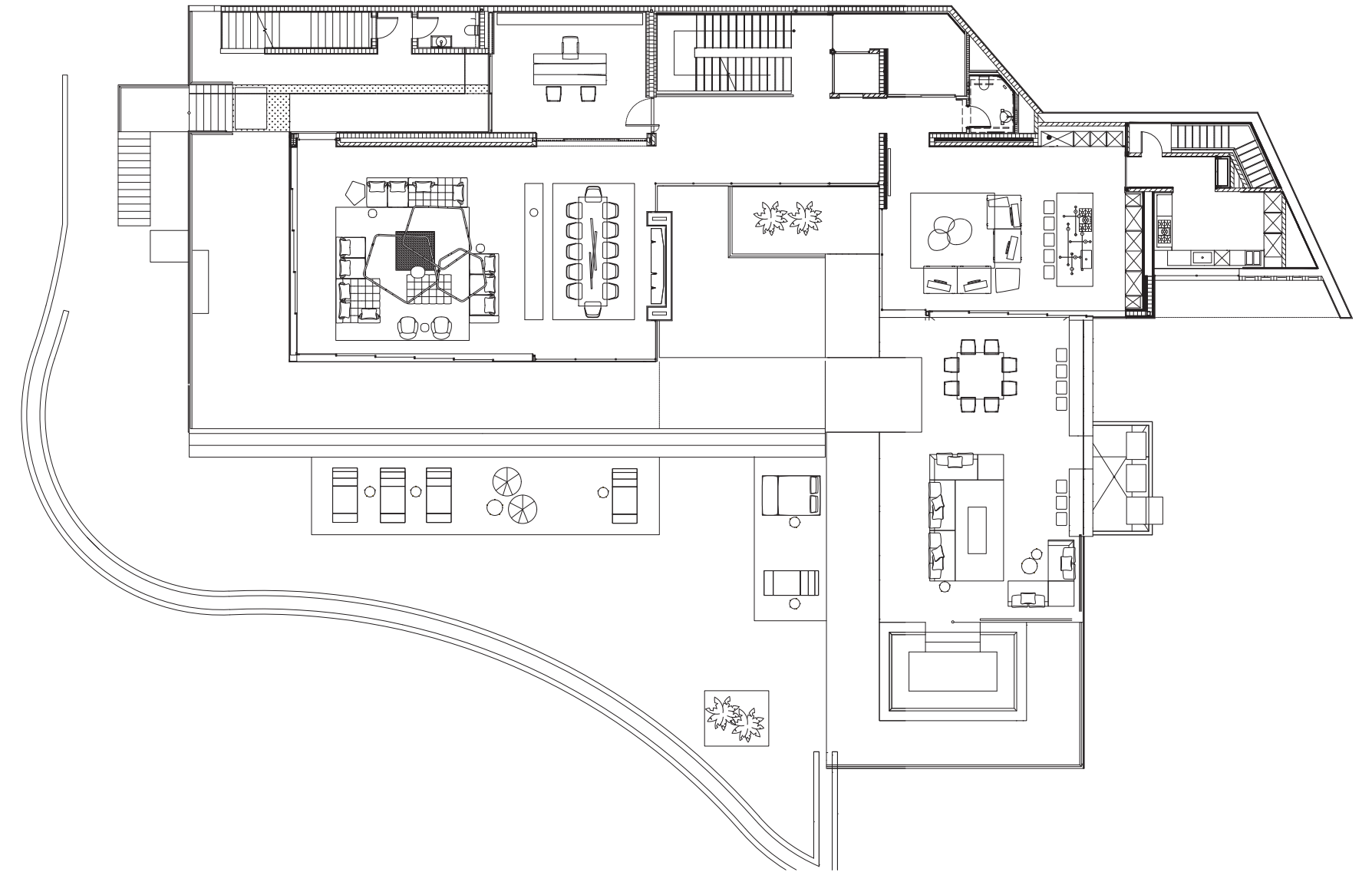
The property has both incredible indoor and outdoor areas with a 163ft wrap-around infinity pool, bar, and lounge with a fire pit, plus a rooftop terrace with a dining area, bar, spa, and lounge overlooking expansive views, from the San Gabriel Mountains to Downtown LA all the way to Santa Monica and Catalina Island.

The project is conceived as an oasis in the sky since the home is designed to function as a self-contained resort with living rooms connected to extensive covered outdoor terraces enclosed by a pool and set among lush landscaping.

The geometric shapes,
natural textures,
and modern lines
of 8408 Hillside
effortlessly

integrates Henge's
unique collection and
rich materials into
the design.

Walking through the house is a unique experience that allows you, through a sequence of intimate spaces and coherent moods, to take in the Henge aesthetic. That aesthetic was formed over the years through careful research regarding materials and the infinite possibilities of how they may be employed. Our journey had the ultimate goal — to elevate domestic spaces to a new concept of home living. The first floor features a living area that is a continuous play on outdoor and indoor space, resulting in a glamorous synthesis — a perfect fit with the magic of Hollywood.















“We fell in love with the view from the property on our first visit — we wanted the architecture to take it all in. Like a visor shielding your eyes; the overhangs project out over the LA basin defining deep expansive covered spaces.” — Mark Bullivant, Director of SAOTA, Architecture









“Conceived as an oasis in the sky; the outdoor spaces are as important as the indoor — courtyards are inserted into the floor plates and occupy prominent volumes to emphasize the immediacy of the garden. The elements of the landscape interact with the panoramic views of the basin enriching the outlook by adding a depth of field.” — Mark Bullivant, Director of SAOTA, Architecture

Hillside's design is a continuation of blending outdoor and indoor spaces and harmoniously combining contrasting layers.



Stone bathrooms and kitchens mixed with soft leathers, lustrous metals, and tropical fauna create a mood of an oasis away from the hectic city life.

“The dynamic characteristics of this beautiful metropolis perfectly enhances the beauty of Henge’s material and workmanship.”
— Lars Hypko, MASS Beverly, Interiors

















Henge's unique touch
adds richness to the
grand interiors, through
their collections
characterized by strong

and sophisticated
personality, refined
materials and quality
craftsmanship.

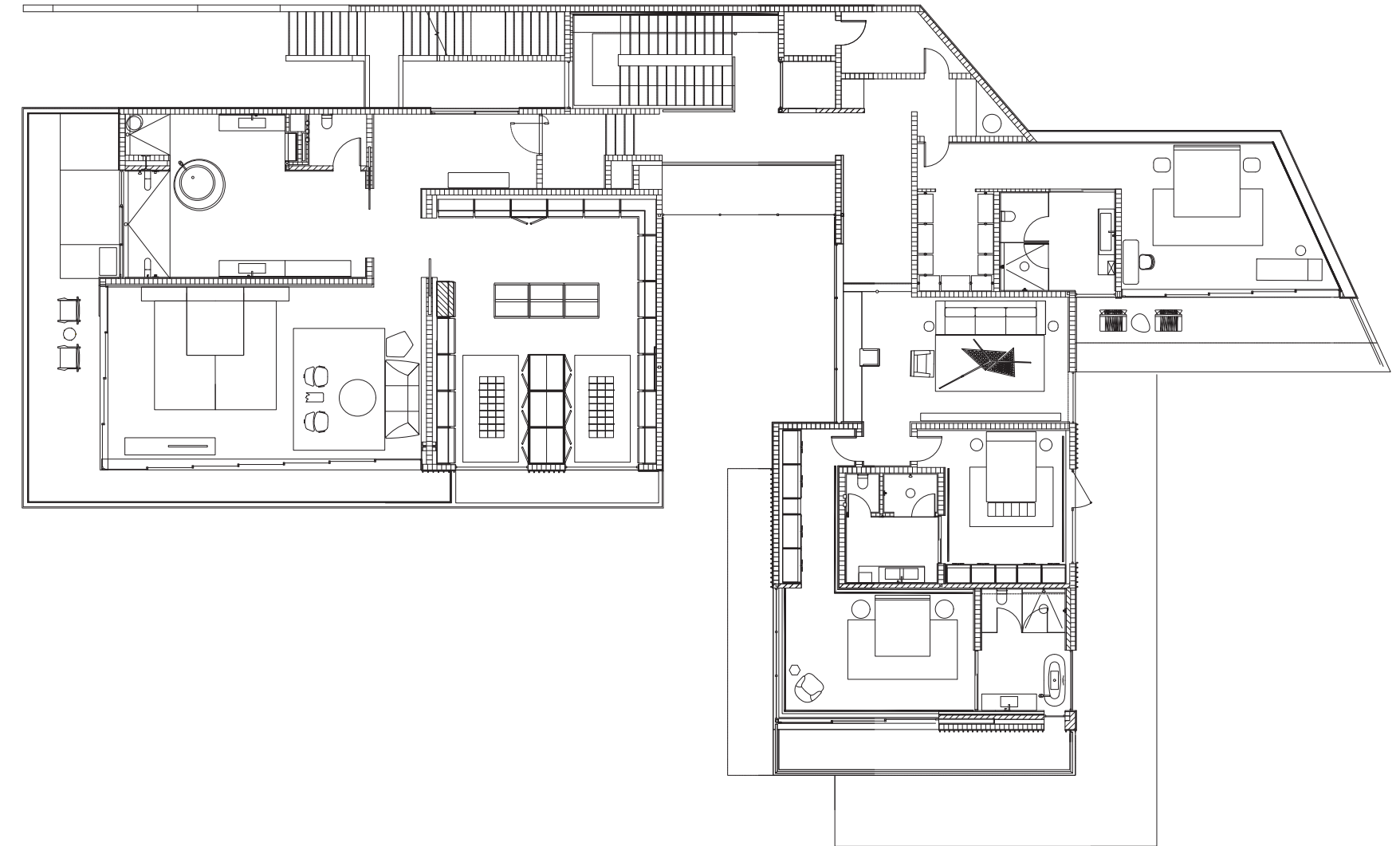








To achieve the best result, Henge customized specific furniture pieces to integrate seamlessly with accessory details and bespoke wall finishings. Some iconic products such as the K-Table, Soprano Table, Rio Stools and Polygonal Light Rings were changed and adapted to the project, modifying the proportion, the size and adding new materials and color palette. A tailor-made and custom process that reflects Henge's approach — very far from industrial processes but close to craftsmanship sensibility. This is a home which is perfectly set-up for entertaining with multiple bedrooms and living areas.



“Beauty and creativity are found when the complex design vision is perfectly realized through Henge’s impeccable manufacturing.”
— Lars Hypko, MASS Beverly, Interiors







The combination of MASS Beverly's innate understanding of Henge's product design and philosophy, the resort-residential design concept, and the architectural significance of SAOTA's modernity resulted in very specific selections of Henge's collection, including handcrafted pieces made specifically for the 8408 Hillside estate.







An outstanding window on the sweeping Los Angeles panorama, a metropolitan view similarly seen from skyscrapers.











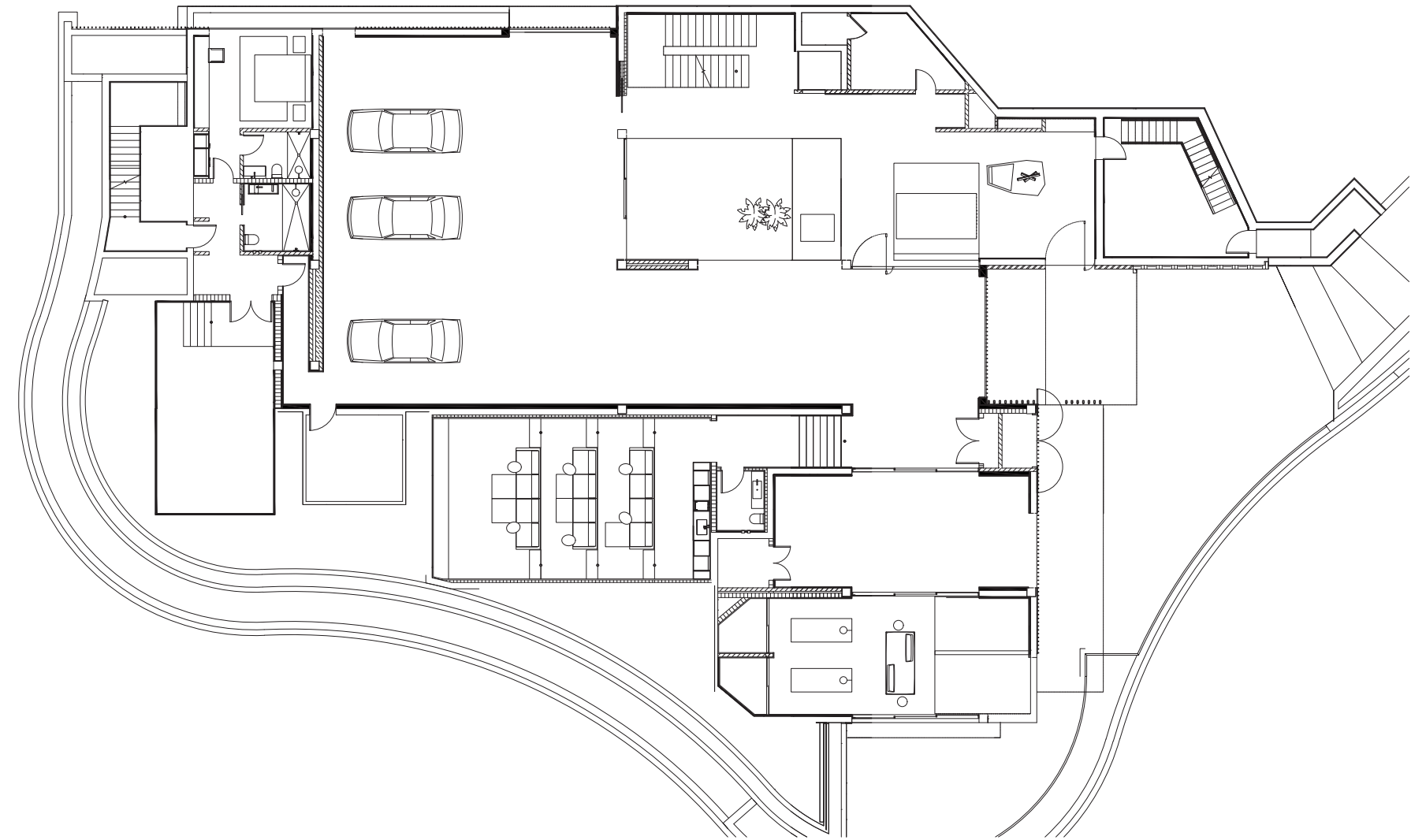




Precious fragments,
sophisticated creations
that are the result of
experimentation and
research, furniture

that challenges
the standards of
conformity and
repetition.

Los Angeles car culture and entertainment philosophy were kept in mind when designing the garage and valet as well as the outdoor entertainment space. A beautiful Ozone Bar was added to the entry level garage and valet area. The bar was chosen because of its sculptural characteristics. It is comparable to an art sculpture that fits into the space not only during an event setting, but also in its everyday environment.













“Ascending from Sunset Boulevard the arrival experience and first impression of the building is one of looking up. This silhouette from beneath was a design driver in defining the forms of the building — the distinctive material and lighting treatments of the eaves and soffits are highly recognizable from below.” — Mark Bullivant, Director of SAOTA, Architecture





This dream home affirms that we are one of the first choices when it comes to furnishings for projects on the international stage.

We are so proud of our
journey.

— Paolo Tormena

CONCEPT, ART DIRECTION
SAOTA, MASS Beverly, Henge

PHOTO ART DIRECTION
Gusto IDS

PHOTO
Andrea Pancino

GRAPHIC DESIGN
Gusto IDS

EDITED BY
MASS Beverly, Gusto IDS

PRINTING
Grafiche Antiga



January 2020



HENGE®

Via della Spiga 34
20121 Milano (MI) — Italy
Tel. +39 0438 1710600 — Fax +39 0438 1710113
www.henge07.com — atelier@henge07.com
Open by appointment

S·34

Offices and Factory
Via G. Verdi, 45
31010 Farra di Soligo (TV) — Italy

THANKS TO
Jeff Thomas, Owner of 8408 Hillside
Mark Bullivant, SAOTA
Isabella Genovese, Henge Interior Dept.
Lars Hypko, MASS Beverly
Seth Matheson, MASS Beverly
Damian O' Hara, Parklane Projects
Fortis Development
Woods + Dangaran
Lux Populi
Chris Sosa
Oppenheim Group
Bond Street Partners

WORKS OF ART COURTESY OF
Brian Ludlow of Creative Art Partners



